

AHG | ESC8000A-E13

Let Hyperscalers meet your bespoke requirements!

Start customizing your AHG | ESC8000A-E13 today!

- ✓ AMD EPYC 9005 Series Processors
- ✓ Modularized Design
- ✓ 8 x Direct 600W GPU Support
- ✓ Optimized Server Configuration
- ✓ Toolless Design

AMD EPYC™ 9005 dual-processor 4U server that supports eight dual-slot NVIDIA® H200 GPUs or NVIDIA RTX PRO™ 6000 Blackwell Server Edition, up to 24 DIMM, two PCIe®5.0 slots and up to six U.2 NVMe drives.

About Hyperscalers

-  **World's First Open OEM**
-  **Free Of Proprietary Software Lock-Ins**
-  **Free Of Proprietary Hardware Lock-Ins**



US Stock



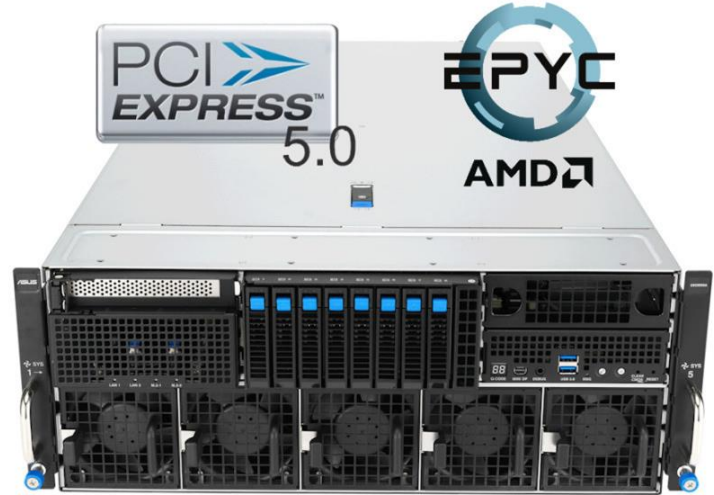
Full US Warranty



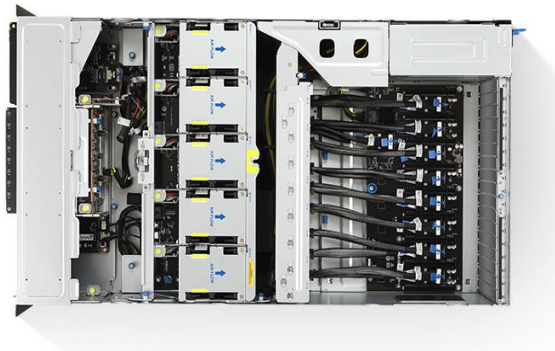
100% Channel Distributor



Metro Delivery 1-4 Days



Optimized server configuration with high-band width PCIe 5.0 and scalable NVMe storage

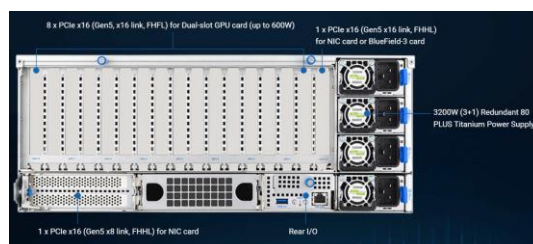


- **High-Performance CPU:** AMD EPYC 9005, 192 Zen 5c cores, DDR5 up to 6400 MHz.
- **GPU Support:** Up to 8 dual-slot NVIDIA H200 or RTX PRO 6000 GPUs.
- **Optimized Connectivity:** 2× PCIe 5.0 slots for low-latency NICs/DPUs.
- **Storage Flexibility:** Hardware RAID, up to 6× 2.5" U.2 NVMe drives.

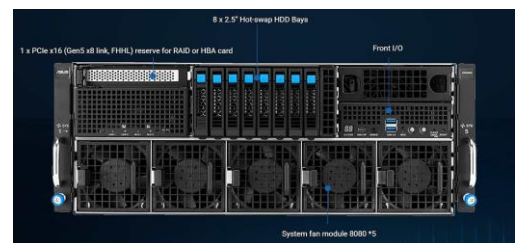
System Layout



Rear Panel



Front Panel



Target Market

- Virtual Machines
- Data Center
- HPC Application
- AI Training
- LLM Inference



AHG | ESC8000A-E13 Specifications

Processor	Processor Type: 2 x Socket SP5 (LGA 6096) AMD EPYC™ 9005 series processors Max. TDP Support: 350W Number of Processors: 2 Processors
Form Factor	4U
Dimensions	W x H x D (inch): 31.5" x 17.3" x 6.9" W x H x D (mm): 800 x 439.5 x 175
Storage	8 x 2.5" Front Hot-swap Storage Bays (Backplane supports up to 8 x NVMe)
Memory	Total Slots 24 (12 channel per CPU, 12 DIMM per CPU) Capacity Maximum up to 3TB per CPU socket Memory Type DDR5 6400//6000//5600 RDIMM Memory Size 128GB, 64GB, 32GB RDIMM
Expansion Slot	Up to 11 slots Rear: 8 x PCIe x16 for dual-slot GPU cards (Gen5 x16 link, FH/FL) 1 x PCIe x16 for NIC/BlueField-3 card (Gen5 x16 link, FH/HL) 1 x PCIe x16 for NIC card (Gen5 x8 link, FH/HL) Front: 1 x PCIe x8 for HBA/RAID card (Gen5 x8 link, FH/HL)
Network Controller	1 x Management Port
Front I/O	1 x Mini DisplayPort 2 x USB 5Gbps ports
Storage	Onboard: Intel® C741 12x SATA3 6Gb/s ports Optional Controller: Broadcom MegaRAID 9560 Series HHHH Channel Card Broadcom 9500 Series PCIe Gen 4.0 Tri-Mode Storage HBAs

Power Supply	3+1 redundant 3200W 80 PLUS Titanium power supply 20-240 Vac, 16A (x4) 50/60Hz
Switch/LED	Front: 1 x Power switch/LED 1 x Location switch/LED 1 x Message LED 1 x Clear CMOS switch 1 x Reset Switch 2 x M.2 LEDs 2 x LAN LEDs 1 x Q-code/Port 80 LED Rear: 1 x Power switch/LED 1 x Location switch/LED 1 x Message LED
Management Solution	Control Center Enterprise (in-band) ASMB12-iKVM for (out-of-band/BMC AST2600)
Rear I/O	1 x USB 5Gbps port 1 x RJ-45 management LAN port
Operating Environment	Operating temperature: 10°C ~ 35°C Non-operating temperature: -40°C ~ 60°C Non-operating humidity: 20% ~ 95% (Non-condensing)
Weight	Net Weight: 42 Kg Gross Weight: 44.23 Kg
Regulatory Compliance	BSMI, CB, CE, FCC(Class A), RCM

Authorised
Hyperscalers
Partner



About Hyperscalers

Hyperscalers is the world's first open Original Equipment Manufacturer offering proprietary-free alternative to traditional Tier 1 OEM vendors.

Hereto to solve Information technology's complexity, Hyperscalers developed the IP Appliance Design Process. Which is basically a process along with a utility, being the Appliance Optimizer Utility, which together, assists service providers 'productize' delivery of their Digital-IP.

Technology Partners



Hyperscalers Australia Head Quarters

10 of 65 Tennant Street Fyshwick
ACT 2609 Australia
P +61 1300 113 112
E info@hyperscalers.com

www.hyperscalers.com